



# DOWNTOWN PHOENIX

FACTS, FIGURES AND AERIAL MAP

**H**ow did a nearly forgotten 9-5 business center awake from its slumber to become one of the great urban underdog stories of the 21st Century? The short answer is investment (\$7.6+ billion since 2005). But investment alone doesn't make a live/work/play/learn neighborhood. It takes both public and private leaders working in collaboration with a passionate community to create a place we are proud to call home. Downtown Phoenix has come a long way, but our work is not done. And that's exciting. Welcome to DTPHX.

Downtown Phoenix has turned into a premier events destination. It's all here: from global sporting events and the biggest names in entertainment, to locally produced culinary, art, music, multicultural and intellectual events.

DTPHX is a nexus of innovation, attracting tech, creative, financial and biomedical companies to create an economically robust epicenter of knowledge and business. An infusion of high-paying jobs and expanding entrepreneurial opportunities—combined with increased living options, a growing mass transit system, cultural and family-friendly amenities and a hyper-local restaurant scene—makes DTPHX a magnet for educated professionals relocating from other markets. Speaking of talent pools, we expect to have 20,000 students taking university-level courses at our educational institutions in Downtown Phoenix by 2024.

*All data presented pertains to the Downtown Phoenix Inc. Service Area, unless otherwise noted.*

#### FACTS AND FIGURES

**\$7.6+ billion**  
Public and private investment between 2005-2023

**24,000+**  
Downtown residential population

#### BUSINESS CORE WORKFORCE\*

**55,500+**  
Within 1 mile

**179,000+**  
Within 3 miles

**312,000+**  
Within 5 miles

\*Originating from Central Avenue and Washington Street (CoStar)



PHOTO: ZEE PERALTA



PHOTO: JILL RICHARDS PHOTOGRAPHY

# SPORTS, ARTS AND CULTURE

## BY THE NUMBERS

**4**  
Major professional sports teams:

- Arizona Diamondbacks
- Phoenix Suns
- Phoenix Mercury
- Arizona Rattlers

**4**  
Phoenix is one of only four cities to host the Super Bowl four times

**2015 + 2023**  
Super Bowl fan events

**2017 + 2024**  
NCAA Final Four fan events

**2016**  
College Football Playoff National Championship fan events

**2026**  
NCAA Women's Final Four games and fan events

**2016**  
Inaugural year of the Cactus Bowl/Cheez-It Bowl/Guaranteed Rate Bowl

**9**  
Theater stages

**12,421**  
Theater + music venue seats

**16**  
Live music venues

**1**  
Family-friendly StoryWalk

**200+**  
Murals

## IN THE NEWS

Roosevelt Row named one of USA Today's 10 Best Arts District in 2022

Children's Museum of Phoenix named one of USA Today's 10 Best Children's Museums in 2022

# DINING AND SHOPPING

## BY THE NUMBERS

**225+**  
Restaurants

**135+**  
Net new bars + restaurants since 2008

**5**  
Restaurants operating in the business core over 25 years

**45+**  
Coffee shops

**1.7 million**  
Square feet of restaurants, bars + retail

**72,000+**  
Square feet of retail expected by 2025

**2**  
Full-service grocery stores

**76%+**  
Locally owned and operated bars + restaurants

**7**  
New breweries since 2019

**1**  
James Beard Award-winning chef serving in Heritage Square

PHOTO: FARA ILLICH





PHOTO: FARA ILLICH

# EDUCATION AND RESEARCH

## PHOENIX BIOSCIENCE CORE (PBC)

The Phoenix Bioscience Core (PBC) is a 30-acre, urban life sciences and medical education hub in the heart of the innovation district in Downtown Phoenix. It is home to the highest concentration of research scientists and complementary research professionals in the region with access to 20 Institutes of Research Excellence within a 2-mile radius. The PBC is the only place where you will find all three of Arizona's public research universities—Arizona State University, Northern Arizona University, and the University of Arizona—in one location collocated with leading bioscience pioneers and innovators.

### CAMPUS INCLUDES:

- The Translational Genomics Research Institute (TGen), a part of City of Hope
- International Genomics Consortium (IGC)
- Exact Sciences
- NIH's National Institute of Diabetes and Digestive and Kidney Diseases (NIDDK) research center
- Dignity Health-Cancer Institute at St. Joseph's Hospital and Medical Center
- Calviri

- ASU's Translational Research Center
- Center for Entrepreneurial Innovation (CEI)
- Venture Café Phoenix hosts a weekly gathering of innovators and entrepreneurs
- 850 PBC, a 227,000 square-foot building of fully lab-enabled center has space available for life science companies
- Approximately 2 million square feet of the planned 6 million square feet has been built on the PBC
- Connect Labs by Wexford

## ARIZONA STATE UNIVERSITY (ASU)

- 5000+ students
- College of Health Solutions
- Edson College of Nursing and Health Innovation

## UNIVERSITY OF ARIZONA

- 900+ students
- Eller College of Management
- College of Medicine-Phoenix
- College of Pharmacy
- College of Public Health
- College of Nursing
- Telemedicine Program

## NORTHERN ARIZONA UNIVERSITY

- 400+ students
- Athletic Training Program
- Occupational Therapy Program
- Physical Therapy Program
- Physician's Assistant Program

## DOWNTOWN EDUCATION

### ASU DOWNTOWN PHOENIX CAMPUS

- 15,000+ students\*
- Thunderbird School of Global Management
- Walter Cronkite School of Journalism and Digital Media
- College of Integrative Arts and Sciences
- Sandra Day O'Connor College of Law
- Watts College of Public Service and Community Solutions
- Mary Lou Fulton Teachers College
- Barrett Honors College
- J. Orin Edson Entrepreneurship + Innovation Institute

\*Includes College of Health Solutions and Edson College of Nursing and Health Innovation students

### TUFTS UNIVERSITY SCHOOL OF MEDICINE

- 100 students
- Doctor of Physical Therapy Program

### BIOSCIENCE HIGH SCHOOL

- 400+ students
- In the center of the Phoenix Bioscience Core, the high school specializes in biosciences and the promotion of a STEM-based education

# LIVING DOWNTOWN

## RESIDENTIAL

11,784

Total housing units built between 2000-2022

34%

Percentage of housing built since 2000 and completed between 2020-2022

## EDUCATION

57

Schools located in the broader Central City area

## IN THE NEWS

Phoenix named one of the Top 10 Cities for a Great Downtown Living Experience by StorageCafe

## PARKS AND RECREATION

7

Public parks, including 32-acre Margaret T. Hance Park

2

Dog parks

\$100 million

Capital campaign to revitalize Margaret T. Hance Park, the 32-acre park located in the heart of downtown, which sits atop the Interstate-10 freeway tunnel. The Hance Park Revitalization Project is a public-private partnership led by the Hance Park Partner Coalition, consisting of the Phoenix Parks and Recreation Department, Phoenix Community Alliance and Hance Park Conservancy.



PHOTO: TAYLOR COSTELLO

# DEVELOPMENT AND HOSPITALITY

## PHOENIX CONVENTION CENTER

1,000,000

Square feet of meeting and exhibit space

1,007,900

Anticipated convention attendees between 2023-2032

9

Phoenix's ranking in the 2022 U.S. Convention City Index

## HOSPITALITY

4,408

Hotel rooms

2

Hotels under construction

## WORK SPACE

6.5 million

Square feet of existing private office space

4,000+

Coworking desks and shared space memberships

12

Coworking locations

3

Makerspaces



PHOTO: ZEE PERALTA

# DOWNTOWN INFRASTRUCTURE

## GETTING AROUND DOWNTOWN

**20**  
Express and RAPID Bus routes delivering commuters into Downtown Phoenix

**Alternative Transit**  
Comprehensive micromobility program

**Shuttle Service**  
Servicing students traveling to ASU's Downtown Phoenix campus

**Freeways**  
Easy downtown access via I-17 + I-10

## SKY HARBOR INTERNATIONAL AIRPORT

**PHX Sky Train**  
Direct transportation from Sky Harbor International Airport, servicing Valley Metro's Light Rail system, airport Terminals 3 & 4, East and West parking garages as well as the Rental Car Center

**10**  
Minute travel time to Phoenix Sky Harbor International Airport

**44.3 million**  
Airline passengers in 2022

## VALLEY METRO LIGHT RAIL

**26 mile**  
Regional system route serving Mesa, Tempe + Phoenix

**South Central Extension**  
5.5 miles of Valley Metro Light Rail scheduled to open in 2024

**Northwest Extension**  
1.5 miles of Valley Metro Light Rail scheduled to open in 2024

**Arizona State Capitol Extension**  
1.4 miles of Valley Metro Light Rail scheduled to open in 2027

**Downtown Light Rail Hub**  
Recently completed and scheduled to open at Central Avenue and Washington Street in 2024

**24,600**  
Average number of weekday passengers that boarded Valley Metro Light Rail in 2022

**8**  
Downtown Valley Metro Light Rail stations

## SUSTAINABILITY

**850**  
Number of trees planted in the last 10 years

**92.6%**  
Waste diversion rate during Super Bowl LVII

**12 million**  
Square feet of building space cooled with Cordia Phoenix's sustainable chilled water system

**20**  
City of Phoenix "Certified Green Business Leader" companies recognized for their dedication to sustainability



## City of Phoenix

Community and Economic Development  
200 West Washington Street  
20th Floor  
Phoenix, AZ 85003-1611  
CEDD Main Number: 602-262-5040  
TTY: 602-534-3476  
Website: phoenix.gov/econdev



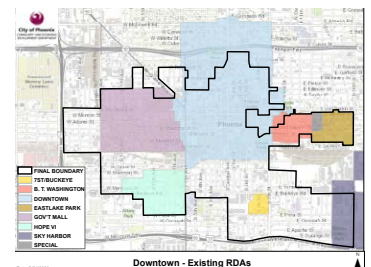
1 E. Washington Street, Suite 230  
Phoenix, AZ 85004  
Telephone: 602-254-8696  
Email: info@dtphx.org  
Website: dtphx.org



## MEMBERSHIP MAKES A DIFFERENCE

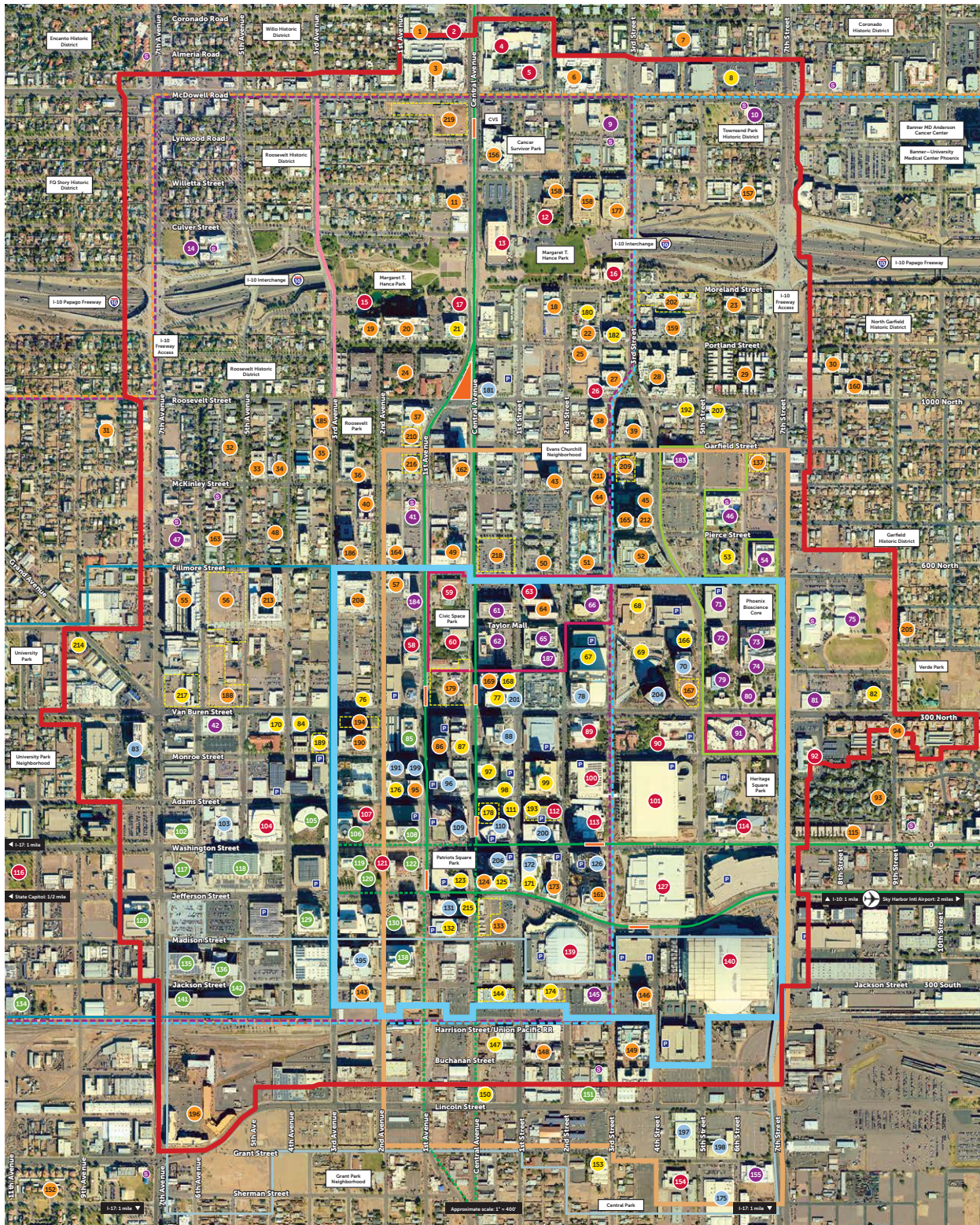
Phoenix Community Alliance (PCA) activates and advocates through Committee initiatives, builds consensus and generates progress on issues that are integral to an evolving downtown. PCA builds momentum by galvanizing all levels of downtown's economic engine, including city leadership, hyperlocal businesses, regional non-profits, large corporations, educational systems and institutions, and private professionals.

7 robust advocacy Committees  
32 industry sectors represented  
300+ engaged Members...and growing!



COVER PHOTO: ZEE PERALTA

# DOWNTOWN PHOENIX



- 1 Arts/HAUS
- 2 The Muse
- 3 The Muse
- 4 Arts District Apartments
- 7 Coronado Commons
- 11 Artisan Lofts on Central
- 18 en Hance Condominiums
- 19 Portland Place
- 20 Portland on the Park
- 22 The Oscar
- 23 Portland Square
- 24 Roosevelt Square
- 25 Reflections at Portland
- 27 Illuminate Apartments
- 28 Roosevelt Row Apartments
- 29 Artisan Village
- 30 Portland 38
- 31 Center 8
- 32 Roosevelt Commons
- 33 Lofts at McKinley
- 34 McKinley Row
- 35 Townhomes on 3rd
- 36 The McKinley
- 37 UnionRoosevelt
- 38 Liner Apartments Phoenix
- 39 Roosevelt Point
- 40 Urban Living on 2nd Ave
- 43 Derby
- 44 215 E McKinley
- 45 Phoenix 323
- 48 MonarchFive
- 49 Westwood Ho
- 50 St. Croix Villas
- 51 The Met Apartments
- 52 Skyline Lofts
- 53 401 Pax
- 56 High Street Filmore
- 57 The Lofts at Filmore
- 64 Taylor Place Student Housing
- 86 44 Monroe
- 93 Renaissance Park Condominiums
- 94 Camden Copper Square
- 95 Orpheum Lofts
- 115 Artisan Parkview
- 124 Residences at CityScape
- 133 Jefferson Place
- 137 Sipe on 6th
- 143 Campaigne Place
- 144 The Summit
- 148 Stadium Lofts
- 149 The Battery
- 152 Matthew Henson Apartments
- 156 Circa Central Avenue
- 157 Willetta 15
- 158 Portland at Hance Park
- 159 Portland Broadstone
- 160 8th & Row Apartments
- 161 Adeline
- 162 The Stewart
- 163 6th Avenue Cottages
- 164 Urban Living on Fillmore
- 165 Alibi
- 167 Palmscott Tower
- 169 Kensec Phoenix
- 173 The Ryan
- 177 Lydian Apartments
- 179 Central Station Redevelopment
- 185 EcoFlx
- 186 Aspire Filmore
- 188 Future Development
- 190 XPhoenix
- 194 XPhoenix Phase 2
- 196 Alta Warehouse
- 202 Deck Park Vista
- 205 Verde Park Condominiums
- 208 The Rey
- 209 MacIntosh
- 210 UnionRoosevelt Phase 2
- 211 Ids on McKinley
- 212 700 N. 4th St.
- 213 AVE Phoenix Terra
- 216 Salya
- 218 701 N. Central
- 219 New Development
- 2 Arizona Opera
- 4 Phoenix Arts Museum
- 5 Phoenix Theater
- 12 Coffer Plotkin Jewish Center
- 13 Burton Bar Central Library
- 15 Japanese Friendship Garden
- 16 Phoenix Center for the Arts
- 17 The Edith
- 26 MacArthur
- 58 YMCA/ASU Recreation Center
- 59 ASU Student Union/Post Office
- 60 AE England
- 63 Valley Youth Theater
- 64 Chase Field
- 140 Chase Field
- 154 George Washington Carver Museum & Cultural Center
- 85 US Bankruptcy Court
- 102 Phoenix Police Headquarters
- 105 Phoenix Municipal Court
- 106 Phoenix City Hall
- 108 100 West Washington
- 117 Police Forensic Lab
- 118 Sandra Day O'Connor Federal Courthouse
- 119 Calvin C. Goode Municipal Bldg
- 120 City Council Chambers
- 122 Historic City Hall/County Courthouse
- 128 Maricopa County Forensic Science Center
- 129 County Administration Building
- 130 Maricopa County Superior Court
- 134 Human Services Campus
- 135 County Justice Center
- 136 County Sheriff's Office
- 138 County Court Tower
- 141 Clerk of Superior Court Customer Service Center
- 142 County Assessor's Office
- 151 Job Corps
- 70 APS
- 78 Arizona Republic/Channel 12
- 83 Madison Square
- 88 201 N. Central Ave.
- 96 101 North
- 103 Channel 10 News
- 110 1 North Central
- 109 Renaissance Square Towers
- 126 Bank of America
- 131 Luthi City Center
- 172 Block 23 Office Properties
- 175 Galvanize
- 181 Ten-O-One Building
- 191 Ellis Building
- 195 225 W. Madison
- 197 Lincoln Union
- 198 WebFT
- 199 The Monroe
- 200 Marketplace One
- 201 Freepoint McMoran
- 204 Arizona Center
- 206 CityScape
- 8 Midgewell Marketplace
- 21 EQUINOX Hotel
- 53 Best Western
- 67 Shelton Grand Phoenix
- 68 AMC 24
- 69 Arizona Center
- 76 Crescent Ballroom
- 77 Westin Hotel
- 82 SpringHill Suites by Marriott
- 84 Welink Marketplace
- 87 Hotel San Carlos
- 97 Hilton Garden Inn Phoenix Downtown
- 98 Renaissance Phoenix Downtown Hotel
- 99 Hyatt Regency Hotel
- 111 Hilton
- 123 CityScape
- 125 Palomar Hotel
- 132 Courtyard and Residence Inn
- 147 The Grove
- 144 Phoenix OLC/Airmont Hotel & Residences
- 150 The Duce
- 153 Warehouse 215
- 166 AC Hotel
- 168 Hampton Inn
- 170 The Van Buren
- 171 Fry's Grocery Store
- 174 Home Suites
- 176 Hyatt Place
- 178 The Edith
- 186 Penetration
- 182 Cambria Hotel
- 189 The Abbey Phoenix
- 192 Greenwood Brewing
- 193 New Development
- 207 The Blocks of Roosevelt Row
- 214 Egyptian Motor Hotel
- 215 Many Hotel
- 217 New Development
- 9 AZ School for the Arts
- 10 Genesis Academy
- 14 Kenilworth Elementary School
- 41 Phoenix College
- 42 Phoenix Forge
- 46 Phoenix Union Bioscience H.S.
- 47 Rio Salado College
- 54 UA Cancer Center at Dignity Health
- 61 School of Journalism/KAET8
- 62 ASU University Center
- 65 ASU Center for Law and Society
- 66 ASU College of Nursing & Health Innovation
- 71 Phoenix Bioscience Core Garage
- 72 Translational Genomics Research Institute (TGI)
- 73 Bioscience Partnership Building
- 74 Health Sciences Education Bldg
- 75 ASU Preparatory Academy
- 79 Arizona Biomedical Collaborative
- 80 UA College of Medicine-Phoenix
- 81 UA College of Medicine, Building 5
- 91 ASU Mesa
- 145 Scheduling Institute/On Jackson
- 155 ASU - Grand Street Studios
- 183 Workload Science + Technology
- 184 Fusion On First
- 187 Thunderbird School of Global Management

## DOWNTOWN PHOENIX

OUR FUTURE IS TALL

- Downtown Phoenix Inc. Service Area
- Enhanced Municipal Services District
- Current Project Sites
- Warehouse District
- Capitol Mall District
- ASU Downtown Phoenix Campus District
- PHX Core Innovation District
- Two-Way Protected Bike Lane

- Planned Metro Lightrail Route
- Metro Lightrail Route
- Metro Lightrail Stop
- Phoenix Bioscience Core
- City Council District 4
- City Council District 7
- City Council District 8
- Parking Garage
- School

- Residential
- Arts/Cultural/Sports/Event
- Government/Non-Profit
- Offices & Buildings
- Hotel/Public Gathering
- Education/Research

